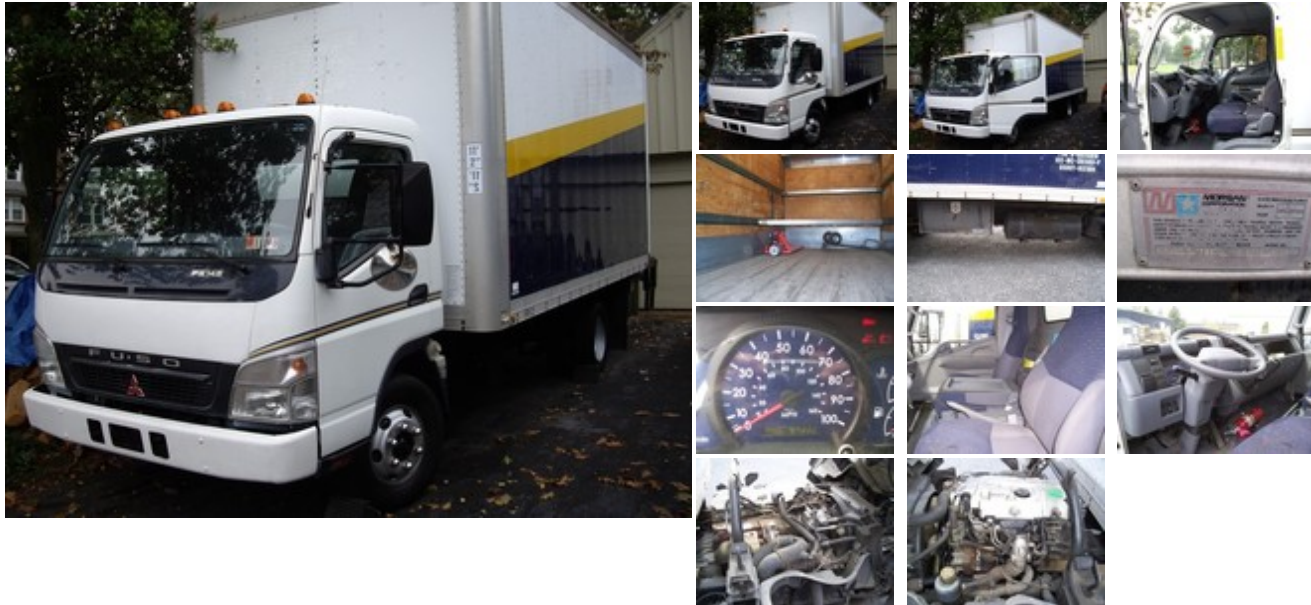


2005 Mitsubishi Fuso FE145 14,500# FIVE SP MANUAL - 167K MI./16' VAN W/LIFT GATE \$16,500.00
 (Stock# HEJ/RON M.)



BALTIMORE MACK TRUCKS, INC. - Contact Harold Jones - 301-573-3578

Description: 14,500# GVWR, REASONABLE OFFERS WILL BE CONSIDERED! OWNER IS CEASING HIS TRUCKING OPERATIONS, VACUUM/HYDRAULIC BRAKES, ENGINE BLOCK HEATER, HORIZONTAL EXHAUST, FRONT/REAR DUAL CALIPER DISC BRAKES, RH STEEL TOOL BOX, MODEL YEAR 2000 MORGAN "GOLD SERIES" 16' X 91" HIGH, 96" WIDE VAN BODY, TWO (2) ROWS OF "E" TRACK ON SIDES, PLYWOOD LINED, TRANSLUCENT ROOF, SCUFF, WOOD FLOOR W/MODEL YEAR 2005 1,600# LIFT GATE W/ALUMINUM TAPERED FOLD DOWN DECK. BODY COULD BE REMOVED & WE WOULD SELL IT OR THE TRUCK CHASSIS SEPARATELY. VINYL DECALS HAVE BEEN REMOVED FROM THE VAN BODY. CONTACT HAROLD JONES CELL 301-573-3578 WITH QUESTIONS.

Listing#:	74734	Type:	Trucks	Category:	Box
Unit Location:	Hagerstown, MD United States	Stock#:	HEJ/RON M.	VIN#:	JL6BBG1S25K000094
Mileage:	167,232	ECM:	n/a	New or Used:	Used
Engine Make:	Mitsubishi			Engine Model:	4 CYLINDER DIESEL 4/4M50
Engine Horsepower:	175			Engine Brake:	Yes
Fuel Tank:	33 GALLON STEEL RHS RAIL MOUNTED			Transmission Type:	5 SPEED MANUAL
Transmission Make:	MITSUBISHI FUSO MANUAL			Suspension Type:	Spring

Suspension MITSUBISHI FUSO

Manufacturer:

Rear End Type: MITSUBISHI FUSO

Axle: Single

Rear Axle 9880

Rating:

Tire Size: LT215/85R16

Color: WHITE CAB/BLUE&YELLOW VAN BODY

Interior Type: FULLY TRIMMED CLOTH W/TWO (2)
PERSON BENCH SEAT

Premium Yes

Stereo:

Cassette: No

Mp3: No

Power Yes

Windows:

Power Steering: Yes

Telescopic: Yes

Overdrive: Yes

Structural No

Damage:

Wheel Base: 152"

Ratio: 4.875

Front Axle 5360

Rating:

Axle 4X2

Configuration:

Wheel Type: Steel Disc

Double Frame: No

Air Yes

Conditioning:

Satellite Radio: No

Compact Disc: Yes

Abs: Yes

Power Locks: Yes

Tilt Wheel: Yes

Sunvisor: No

Condition: Average

Title Clear Title

Information:

All information listed is believed accurate. Pictures, specifications, prices, and all information are subject to change and correction without notice. All liability is expressly disclaimed.